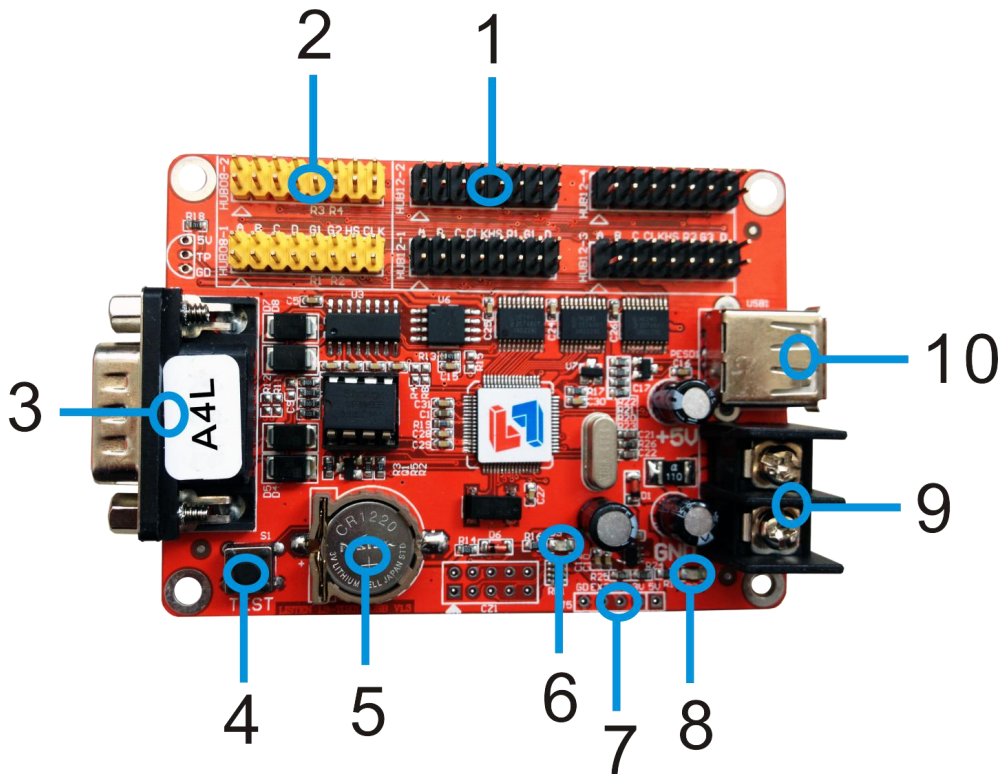


Specification for A4L LED Display Controllers

Version	Date	Reason
V2.00	2015/08/07	创建文档

Hardware:



Number	Interface Name	Description
1	HUB12 Port	Connect HUB12 module
2	HUB08 Port	Connect HUB08 module
3	DB9 port	DB9 serial port
4	Multifunction button	Can support : 1.Test LED panel 2.Restore factory settings
5	RTC Button battery	RTC Power , Voltage 3V
6	Status indicator	Indicating working state
7	Sensor port	Connect TEMP sensor
8	5V Power indicator	Indicating power state
9	5V Power Port	Wide voltage input 3.5V-6V
10	USB Port	U Disk upgrade port

Parameter:

Memory	2MByte
Adaptation	Single color,Double color
Pixels	Single:32K ,Double:32K
Range	Single:2048*16 2048*32 1344*48 1024*64 Double:2048*16 1024*32 672*48 512*64
Function	Multi area display/Multi language version
Program NO.	Support 128 program,Each program 16 zones
Area type	Text/Image/Animation/Time/Analog clock/Timer/Temperature
Frame mode	Program Water frame/Area Water frame
Clock	Digital clock/Analog clock/Countup/Countdown
Communication	RS232 and USB port;Customizable RS485
Display Port	2 *HUB08 port,4* HUB12 port
Sensor	Temperature Sensor
Brightness	16 Level brightness,Automatically adjust the period of time
Remote	Support Timing Switch/Software Switch
Voltage	3.5V~6V
Max Power	<1W
Temperature	-40℃-85℃
Developent	DLL
Software	LED Player6.0

Serial Interface Description:

Controller using serial port is the DB9 interface , the pin definition as follows :

Pin number	Pin Names	Description
2	TXD	RS232 Send
3	RXD	RS232 Receive
5	GND	Power ground
7	DATA+	RS485 D+
8	DATA-	RS485 D-
Other pin is empty, 232 communication using 232 serial through line.		

Dimensional drawing:

